



The Shapinsay Sound



LOCAL

The newsletter for the island of Shapinsay produced by the Shapinsay Development Trust.
Registered Charity Number: S0034818; Registered Company Number: SC255127.

Contact Information : Email: SDTOffice@shapinsay.org.uk

Telephone: 01856 711733.



We have been having fun in November

We had a special screening of the Lego Ninjago film when the Screen Machine visited. It was a great film and everyone enjoyed it.

Thanks to Parent Council and the Development Trust for helping us to see the film.



The Nursery children have been enjoying playing in their new role play area – a garage. They've been building and fixing all sorts of cars, so if you need a mechanic please ask some of our youngest children to help.

P1 – 3 have been learning about light and colour. They have identified sources of man-made and natural light and tested which light sources are brighter. They've even managed to create their own electrical circuits. In RME they have been learning about Diwali and the story of Rama and Sita.

P4 – 7 have been learning about sound. They did a sound walk round school, measuring the sound in decibels in different areas of the school. The children have also found out about the effects of different volumes of sound on the ear.



Published by the Shapinsay Development Trust. Disclaimer: The content and opinions expressed in Shapinsay Sound are those of individual authors and their represented groups. These views are not necessarily shared by the publisher

SHAPINSAY
DEVELOPMENT
TRUST

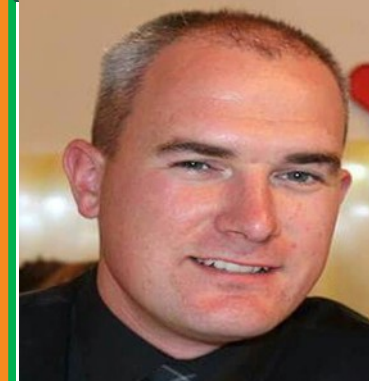
The Shapinsay Sound



December 2017

From the Chair

by Steven Bews



As the weather turns wintry and cold the annual challenge of keeping our homes warm for the next few months in particular is upon us. In the recent Housing Needs survey distributed on the island a number of people on Shapinsay asked to be put in touch in confidence with fuel poverty charity THAW to see if they were eligible for any heating help. We are concerned that there may be others who maybe didn't complete the survey but who may qualify for help and so we wanted to make folks aware of what's available.

Following a meeting between SDT and Thaw we are actively supporting their outreach to our island and urging anyone who is struggling to keep their home warm to read THAW's article in this edition of the Shapinsay Sound and to think about contacting them to find out more. You will also find details inside this newsletter of other help available from Orkney Islands Council and Firefly Energy (Orkney) for various insulation and heating grants.

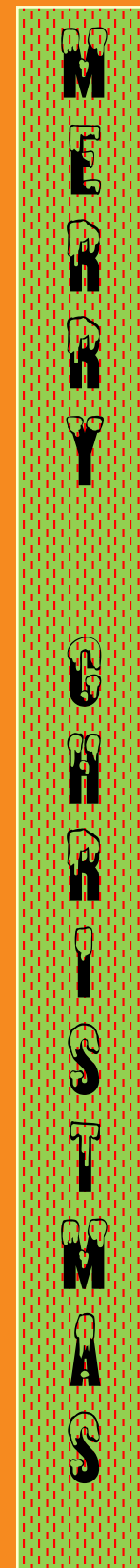
All these funding strands which to aim to tackle fuel poverty and energy efficiency are complimentary and it's hoped that there is something on offer that could be of benefit to many households. The links between a warm home and health and wellbeing are well proven so it is worth taking time to investigate what's on offer.

Meanwhile as we head towards the end of the year we look forward to holding a public consultation early in the New Year to announce and discuss the findings of the recent Housing Needs Survey, BIGHT Hydrogen project update and unveil the latest island development plan. Finally, on behalf of the Board and Staff of SDT, I would like to wish you all a **Merry Christmas and all the best for 2018.**

Shapinsay Development Trust



The housing survey has identified that there is still a need for more housing on Shapinsay so we would like to hear from anybody who has some land near the village that they would be interested in selling to the trust. Please let us know at either :-
luke.fraser@orkney.gov.uk
or
boathouse@shapinsay.org.uk



Thaw



Are you warm enough? Do you want help to be warmer?

THAW Orkney and [Shapinsay Development Trust](#) are joining forces to assist those households in Shapinsay who may be in fuel poverty, or on a low income, or in debt, or with child care or caring responsibilities, or who are coping with long-term health issues. If this is you, or someone you know, then we may be able to help you.

THAW Orkney is a locally based charity whose services are provided free and aim: **‘To work for households in all Orkney communities to reduce levels of fuel poverty and achieve affordable warmth’.**



‘THAW’ stands for ‘Tackling Affordable Household Warmth’ and as such we will advise and work with you to enable you to be warmer in your home as well as perhaps save you some money with your bills.

And this is precisely what the Shapinsay Development Trust want to enable too. So, we’re planning a joint scheme after the turn of the year to provide bespoke one-to-one advice to householders through a drop-in event.

You may have been involved in energy saving programmes before and due to the complexity of some of these programmes not been able to make progress or complete the processes needed. We know that feeling! That’s why THAW provides advisers who will act on your behalf if you wish, who will liaise and ensure any actions or referrals are followed-through to completion.

In the meantime, if you’re not already in contact with THAW but you’d like assistance before the turn of the year, either in our Kirkwall office or in your own home, then contact THAW Orkney on info@thaworkney.co.uk or telephone (01856) 878388 or call into the Kirkwall Office at 15 Victoria Street and one of our advisers will speak to you and arrange an appointment to suit you. Alternatively, you can contact the Shapinsay Development Trust on (01856) 711218 who can refer you to THAW for assistance.



Shapinsay Wildlife Matters

Winter Thrushes with spotted chests.

There are four species of thrush that spend the winter with us in Orkney that have spotted or flecked chests. At first glance they can be difficult to separate. The song thrush which also breeds here in small numbers is the smallest.

It has dense upward pointing arrows on its white breast, and overall appears warm brown backed with ochre yellow underwings and arm pits. It has a soft “tseep” call and a melodious varied song.



The mistle thrush is the largest of these thrushes, bigger than a blackbird which is another familiar thrush. It has cold grey or even silvery upperparts with none of the warm tones found on song thrushes. The spots on the breast are rounded blobs and if seen clearly appear to point downwards. The underwings are pure white which are very obvious in flight. When the bird is seen flying away it has white edges to the tail, a feature found on no other thrush. These large thrushes are quite uncommon in Orkney and are usually encountered singly. They usually emit a rattling call like an old fashioned football rattle on take off.



The fieldfare is also quite large, with striking complex patterns of grey head and wings, brown back, ochre chest and black tail, with white underwing similar to mistle thrushes. These birds are very sociable and can occur here in huge flocks of thousands of birds in our fields, often accompanied by other thrushes, especially in autumn, but many linger throughout the winter. Fieldfares utter a loud “chat chat chat” call on take off, which can draw your attention to a very noisy flock.

The redwing is almost as small as a song thrush and is perhaps easy to confuse in poor light. However, it has two very distinct features. It has a striking white line above its eye, called a supercilium. Along its flanks and underwing it is bright red. They often migrate in large flocks at night and can be heard overheard emitting a clear indrawn whistle rather like a squeaky clutch.

ELWICK BOOKWRIGHTS



Val reads her work to Amy

The Orkney Book Festival in November was the highlight of the year for the Elwick Bookwrights with writing and reading events from St Margaret's Hope to Stromness, including our very own Life Writing Workshop run by award-winning author, Amy Liptrot, at the Boathouse.

Amy shared with us her experiences of writing and publishing, and set us short writing exercises to do - useful tools in capturing memories to be worked on for autobiography, memoir, diary or blog.

In October, Sheila Garson, who is Convener of our newly-formed management committee, gave a fascinating talk about Orkney writers and writing in Orcadian dialect.

Amy set an exercise for members to write a poem in a dialect or language other than their mother tongue. The Elwick Bookwrights will be taking a break during midwinter, although four of us will be reading Christmas poems at the Kirk on Sunday, 17 December. Our next meeting will be at 10.15 am on Saturday, 20 January 2018, in the Boathouse. After that we shall continue to meet twice each month.

On 17 March the renowned Stromness poet, Pam Beasant, will be coming to Shapinsay to do a Poetry Workshop. Ten places will be offered free of charge to members first, with unused places available to guests for a fee. Membership of Elwick Bookwrights costs £20 per year. To keep abreast of what we are up to, follow our Facebook page.

Kate Fereday Eshete
Secretary, Elwick Bookwrights Telephone: 711704

Indoor Bowling for Adults



Resurrecting Indoor Bowling for Adults?

A number of years ago, Indoor Bowling used to take place in the Clubrooms. The Community Association has been approached to see if it might be possible to start this activity for adults up again. We need to begin by finding out how much interest there would be. Therefore, would anyone who would be interested in playing bowls on a regular basis please contact **Paul Evans on 711338 or paul@evanssmallholder.plus.com**.

I will need to know the following:

Names and contact details for each person who would like to play bowls;
How often, (e.g. weekly, fortnightly, monthly);
Which evenings of the week would be preferred, (not Friday due to Youth Club).

Please contact me at the latest by the second week in January 2018 so we can discuss this further at our next Community Association Executive meeting.

Variety is spice of life at Boathouse!

2017 has seen the Boathouse take off as a venue for many smaller group events and activities and is a proving a useful complimentary meeting place to the larger facilities at the Community Centre. It also gives us a base from which to partner with SCA on projects such as the recent visit of the Screen Machine and earlier in the year the 'Your Island Your Choice' funding competition. In some cases the Boathouse can act as an Incubator for new pursuits such as the handbell ringing which started practicing there and moved over to the Community Centre as the group expanded and needed more space.

Highlights of the year have included a special visit by Scotland's poet Laureate Jackie Kay who gave a public reading of some of her work at the Boathouse, taking in in some of the sights of Shapinsay during her stay.



Also popular have been regular visits by the Blide Trust offering needle felting workshops and other sessions such as Mindfulness, Tai Chi and a plant sale from their gardening team who also gave a horticultural helping hand around the island.

Other activities have included group oral history recordings for the 'Shapinsay Speaks' project on topics from films shown on Shapinsay, schooling and farming in times past to the glory days of badminton!

A new creative writing group, Elwick Bookwrights also got started during 2017 with an enthusiastic group meeting fortnightly to pick up some writing tips and tricks from guest authors as well as from each other. Pop up events have included a tech-busting 'Easy IT' workshop with Voluntary Action Orkney, a Calligraphy workshop with visiting German artist Tanja Leonhardt plus Kirk community coffee and cake social afternoons. The facility has also started to be booked by mainland groups offering their own events to Shapinsay folk.

In November a Youth Drop-in Centre got underway at the Boathouse fulfilling a long held aspiration of local youngsters to have time together for social interaction. Needing their parents' permission to attend, they take responsibility for organising and running the weekly Friday and Saturday night gatherings, which won votes from the community and funding in the Your Island Your Choice vote back in February.



The Boathouse also acted as a polling station for voting on which projects should receive funding ahead of the YIYC public final in the Clubrooms.

As the saying goes if you don't ask you don't get so anyone with an idea of a new activity or use for the Boathouse community space is encouraged to come and see us about it and we'll do our best to work with you on whatever you have in mind.

Already on the cards for 2018 is a film club and a small book library. We would especially like to offer training, personal development and wellbeing courses, learning opportunities and expert advice sessions so do also please get in touch with any ideas along these or any other lines. Tel 711733 or email cao@shapinsay.org.uk

Shapinsay School Part 2



We've also had Children in Need. At the time of writing we have raised **£179.62** and we have more to take in. Not a bad effort at all.

Pudsey came to visit the school, and we taught him how to sing "Heads, Shoulders, Knees and Toes" in French.

Pupil Council sold Children in Need goodies all week and we all wore PJs and onesies to school on Children in Need day.

We're now starting to get ready for Christmas, practising our singing and playing. Please come along to the various events that we'll be performing at. This includes our end of term assembly at 1.30pm on Friday 22nd December in the school hall – everybody is welcome to join us.

Shapinsay Uniformed Organisations



The uniformed organisations were at the Remembrance Service in Shapinsay at the War Memorial. They are pictured along with other children and Martin Sims who laid the wreath.

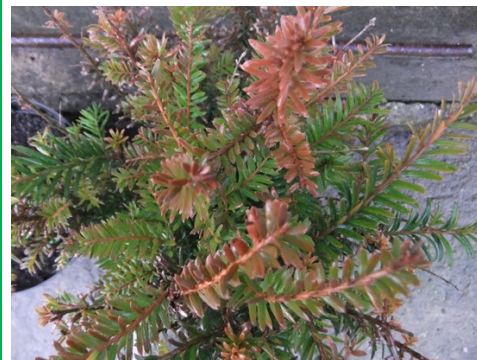
Sinclair took his Beaver promise and the Cubs have all achieved their Fire Safety badge.



On Monday December 11th the Cubs, Beavers, Brownies and Rainbows will be carol singing round Hellier View and Mill Bank. This is our way of giving back to the community so please don't give us donations – we aren't collecting for anything!

If you would like to come along and listen or join in as well as we sing please come along – we should be there from about 3.30 until 4.15.

Garden Notes from Old School Part 2



Well, the current series of Gardeners World has come to an end for this year; what shall I do now on a Friday night without my rendezvous with Monty Don?! No doubt we'll be treated to one of his tours of Italian gardens or something equally exotic to while away the winter evenings while we take a rest from working in our own gardens.

If you have any garden tips that you would like to share or any special plants that you would like to tell others about please let me know and I will include them next month.

Karen Evans, Old School, Shapinsay
karen@evanssmallholder.plus.com

Shapinsay Development Trust

Tenders required.

Erecting a fence at cliff edge at the Boathouse.



We would like to invite tenders for erecting a 1mtr high stock fence along the cliff edge at the Boathouse.

Anybody interested in tendering for this should put their quote in writing by

4th December 2017 to: -

boathouse@shapinsay.org.uk

or

The Boathouse, Shapinsay, Orkney, KW17 2DY

Garden Notes from Old School

As the year draws to a close the garden is shutting down for its winter rest. Leaves and stems of perennial plants have died back but the roots will be growing slowly during the winter giving a stronger plant next spring.

Bare rooted shrubs or fruit bushes are ideal for planting now and can be bought mail order usually with no ill effects from their trip. They are described as being dormant but this just means that they are not putting their energy into producing leaves, flowers or fruit so all their energy is used to create a strong root system. My Redcurrant 'Rovada' has just arrived in the post and after soaking the roots in water for about an hour, it has been potted up in a John Innes No.3 compost. It will live in the greenhouse over the winter so that the wind doesn't rock it around too much and the roots have a chance to establish.

The greenhouse and veg garden have now been stripped of all remaining summer cropping plants, the canes wiped down and stored ready for next year. Outside, the now bare soil has been covered with cardboard and then the contents of two of my compost bins to form a thick (3ins) mulch. Recycled garden waste from the council depot is just as good as long as it is spread thickly to suppress weed growth. I am still picking the last of the broccoli 'Summer Purple' and calabrese 'Matsuri' both of which have cropped really well. On any fine day the door of the greenhouse will be opened to help with ventilation and to try to avoid the growth of mould; any affected leaves will be removed immediately and carefully to avoid spores being transferred to other plants. Carrots, beetroot and salad leaves are still growing well and as an experiment I have just sown seeds of winter lettuce 'Navara', an oriental salad leaves mix and spring onion 'Lisbon'. The air temperature inside is definitely warm enough for them to germinate and hopefully the soil temperature will be too. I like to plant garlic at this time of year and this time I am trying 'Lautrec Wight' which is a hardneck variety designed for autumn planting.

Unfortunately I 'missed the boat' this year when it came to a final cut for the lawn; the ground is now far too wet and there is no chance of getting a mower onto it until next spring. As consolation however, there have been numerous Blackbirds and Redwings finding all sorts of goodies in the grass. I also noticed what I believe is a Wren's nest tucked into the fuchsia bush which was completely hidden when the shrub was clothed in leaves: a reminder that now is the best time to trim deciduous hedges and not in spring when the birds are nesting.

If weather permits us to get out into the garden there are still some colours to enjoy albeit more subtle than those of earlier autumn. When temperatures fall, it is leaves that provide colour rather than flowers. Holly takes on a purple, almost black sheen, new growth on Yew is a beautiful copper colour and Bergenis always look good at this time of year when their leaves turn to red. Climbing over a low wall draped in an old fishing net is Clematis montana wilsonii, which not only has delicate white sweet - smelling flowers in spring, but also provides interest at this time of year with its leaf colour. The ornamental black grass, Ophiopogon planiscapus 'Nigrescens' keeps its colour all year round and contrasts well with dwarf evergreens during the winter months.



Scottish Schools Climbing



5 Shapinsay youths recently took part in the Scottish Schools Climbing Competition.

They had to complete 4 climbs, each climb scored out of 100. The Orkney team climbed extremely well with 4 members qualifying for the final in Glasgow.

Shapinsay Scores

Youth E boys Primary 4/5

Sean Dunnett 374 points,
Erland Rendall 341 points,
Matthew Meason 320 points,

1st Orkney,
3rd Orkney,
7th Orkney,

6th Scotland
16th Scotland
22nd Scotland

Youth B girls Primary 6/7

Jennifer Meason 332 points

5th Orkney,

28th Scotland

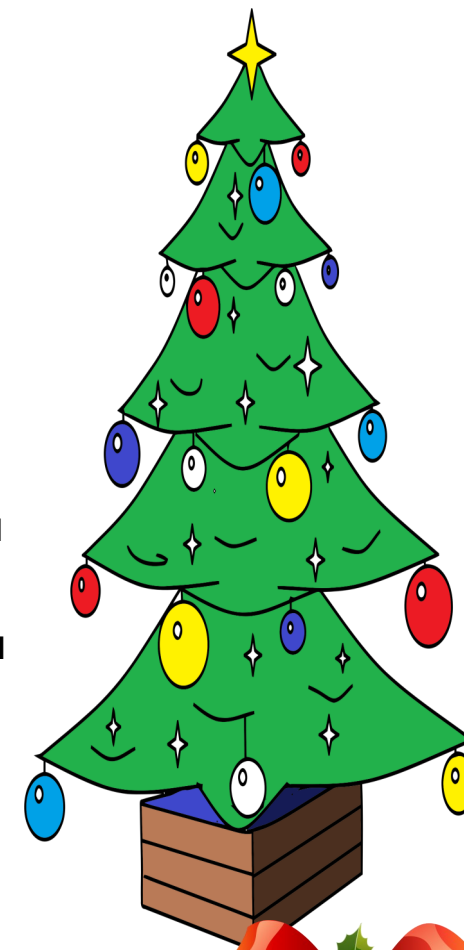
Youth C Secondary S1/2

Gavin Rendall 316 points

4th Orkney,

19th Scotland

Well done everyone who took part.



OIC FIREFLY

Orkney Islands Council, along with Firefly Energi (Orkney), has attracted significant funding to undertake insulation and heating upgrade works in properties across Orkney. The Council has been co-ordinating the Scottish Governments Home Energy Efficiency Programme for Scotland: Area Based Schemes (HEEPS: ABS) project for a number of years and insulation installations have been undertaken on around 10 properties in Shapinsay over the last few years. On top of the HEEPS: ABS funding available additional funding has now been secured for heating upgrades and first time central heating systems.

Funding is available for private sector households who are in properties with low energy efficiency ratings and would like to explore a loft top up, underfloor insulation, internal wall or external wall insulation or heating works.

Contact Firefly Energi (Orkney) on 881151 to enquire about your eligibility for funding. The Orkney Islands Council and Firefly Energi

KIRK

Christmas is a very important part of the Church calendar and at Shapinsay Kirk we are planning lots for the festive season.

We start on Saturday 2nd with an afternoon of Christmas fun for the children. From 2.30 to 4.30 we will be playing Christmas games and doing Christmas activities including a treasure hunt at the Kirk. Parents are welcome to stay or they can come back at 4.00pm for a cup of tea to see what the kids have been doing. Those observant of you will notice the change from the treasure hunt previously advertised. We felt that a treasure hunt outside would be more suited to the summer months, Keep an eye out for information next year.

On Sunday 17th we will be hosting Community Carol Singing at the Kirk from 4 to 6pm. For those of you that have not been to this event before there are performances by the school children and many other local groups, as well as an opportunity to sing all those well known carols. Refreshments will be provided.

And finally the services on Christmas Eve will be the normal service at 12 noon and a family service at 6.30pm. There will be a service on Christmas morning at 11.00am. Everyone is welcome at the Church on any or all of these occasions.

Wishing all on Shapinsay a very happy, healthy and blessed Christmas.

Harvest Home

Harvest Home & prize giving on Sat 28th October, photo by Rachel Garson.

Back row: Ian Eunson, Frazer Leslie, John Leslie, Collin Sclater, Rachel Evans, Ella Moncrieff, John Johnston, Tommy Leslie.

Middle row: Markus Muir, Gemma Leslie, Phillip Miller, Mabel Gaudie(guest speaker), Alistair Rendall, Val More, Andy More.

Front row: Einar Muir, Matthew Meason & Jennifer Meason.



SHAPINSAY COMMUNITY COUNCIL

Office Bearers for the Shapinsay Community Council are :-

Chairperson	Colin Leslie
Vice-chairperson	Scott Garson
Transport Representative	Eileen Phillips
Planning Representative	Christopher Muir
SDT. Representative	Scott Garson



Also Leanne Bews, Fiona Summerfield and Lynsey Leslie. Please feel free to speak with any of the elected councillors should you have any queries.

Shapinsay Surgery



Shapinsay Surgery Christmas and New Year Opening Hours

The surgery will be closed on the following Public Holidays for Christmas and New Year:

Monday 25th December
Tuesday 26th December
Monday 1st January
Tuesday 2nd January

The surgery will hold GP clinics from 9.00 -12.30 on the following days over Christmas and New Year:

Thursday 28th December
Thursday 4th January

The surgery reception hours will be as follows over Christmas and New Year:

Wednesday 27th December – CLOSED
Thursday 28th December – 9.00 – 13.15
Friday 29th December – 12.00 – 13.15

Wednesday 3rd January – CLOSED
Thursday 4th January – 9.00 – 13.15
Friday 5th January – 12.00 – 13.15